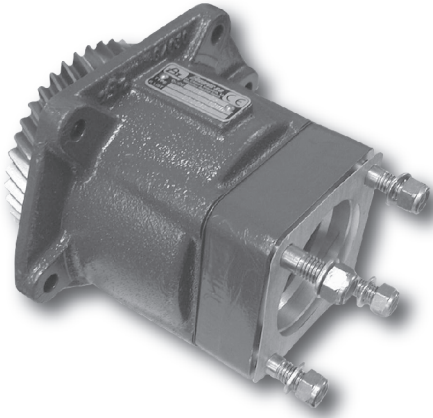


código code

081703/1

PTO MAN ENGINE

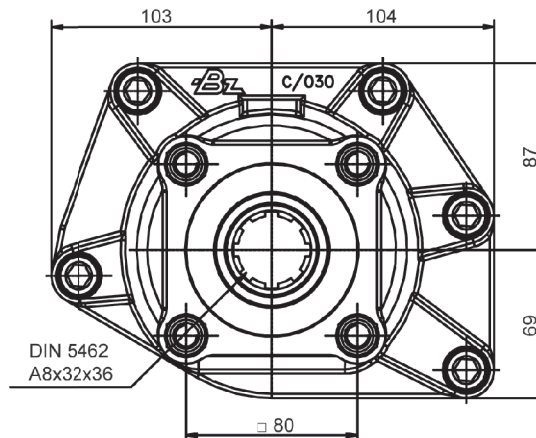
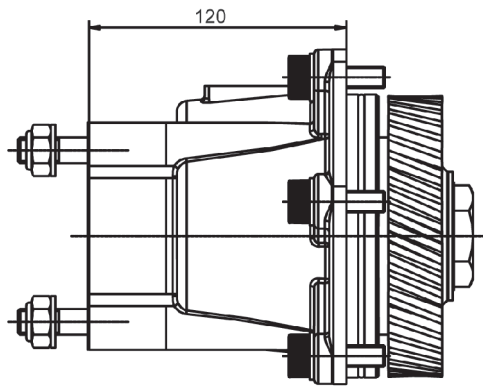
Adaptador (Posterior)
Adapter (Rear)



Descripción Description

Toma de fuerza directo a motor, montaje en el registro frontal de 5 taladros. Concebido para trabajo continuo con bombas ISO 4 taladros.

Engine PTO, direct mounting on the 5 bolts-windows of the engine. Designed for continuous working with ISO 4 bolts pumps.



Notas Notes

Toma de fuerza válida para / PTO suitable for:
- Motor man: D2866LF31, D2866LF34, D2866LF35, D2876LF06
- Motor man Euro 3: D2866LF26 310 Hk, D2866LF27 360 Hk, D2866LF28 410 Hk, D2876LF04 460 Hk, D2876LF04 460 Hk,

Datos Principales Main Data

Par nominal Torque (Nm)	Continuo Continuous	350
	Intermitente Intermittent	490
Peso Weight (Kg)		11
Potencia 1000 r.p.m. Power 1000 r.p.m.		50 C.V. // 37 Kw
Lado de montaje Mounting position		Posterior Rear
Sentido de giro de la bomba Pump rotation		Derecho Right Hand
Relación motor-bomba Engine to pto ratio		1: 1.075